



Applications

Eye bolts and eye nuts are used for lifting machines, appliances or any other objects which cannot be lifted by hand or by fork lift truck.

Range

Van Beest offers a wide range of lifting eye bolts and eye nuts, from M6 up to M64, with Working Load Limits from 0.07 tons up to 16 tons.

Larger sizes can be supplied on request.

Design

The eye bolts and eye nuts are manufactured from C15 or C15E steel, drop forged and with metric thread. Each eye bolt and eye nut is individually stamped with:

- Working Load Limit valid for in-line pull;
- thread diameter;
- material identification symbol C15 or C15E;
- manufacturer's symbol;
- CE.

Finish

The eye bolts and eye nuts can be either self coloured, electro-galvanized or hot dipped galvanized.

Certification

Test certificates can be supplied upon request.

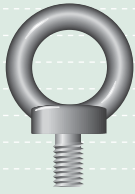
Instructions for use

Eye bolts and eye nuts should be inspected before use to ensure that:

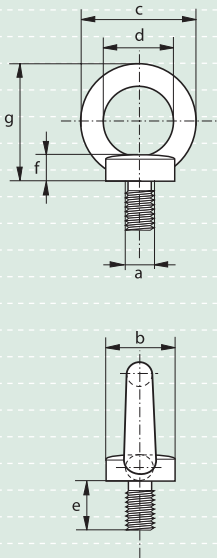
- all markings are legible;
- eye bolts and eye nuts are free from nicks, gouges and cracks;
- make sure the thread is undamaged and clean;
- an eye bolt or eye nut with the correct Working Load Limit has been selected with respect to load to be lifted;
- eye bolts or eye nuts may not be heat treated as this may affect their Working Load Limit;
- never repair or reshape an eye bolt or eye nut by welding, heating or bending as this may affect the Working Load Limit;
- never grind, machine or cut an eyebolt or eye nut;
- when used as lifting devices, the eye bolt or eye nut should always be screwed into the object to be lifted in such a way that they fit properly against the object to be lifted;
- Working Load Limits are valid for in-linepull only and have to be reduced for non-axial loading, for further details please refer to the standard, DIN 580 for eye bolts or DIN 582 for eye nuts.

It is required that the products are regularly inspected and that the inspection should take place in accordance with the safety standards given in the country of use. This is required because the products in use may be affected by wear, misuse, overloading etc. with a consequence of deformation and alteration of the material structure.

Inspection should take place at least every six months and even more frequently when the products are used in severe operating conditions.



S-8140
E-8140



Green Pin® eye bolts generally to DIN 580

- **Material** : carbon steel, C15
- **Safety factor** : MBL equals 6 x WLL
- **Standard** : generally to DIN 580
- **Finish** : self coloured
electro-galvanized
- **Certification** : certificates can be supplied on request

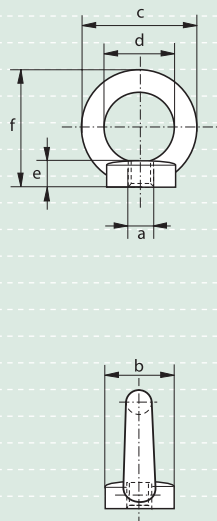
working load limit	diameter thread	diameter base	diameter eye outside	diameter eye inside	length	thickness base	height	weight per 100 pcs
tons	a mm	b mm	c mm	d mm	e mm	f mm	g mm	kg
0.07	M 6	20	36	20	13	6	36	3
0.14	M 8	20	36	20	13	6	36	6
0.23	M 10	25	45	25	17	8	45	10.3
0.34	M 12	30	54	30	20.5	10	53	17.7
0.49	M 14	35	63	35	27	12	60	27.7
0.7	M 16	35	63	35	27	12	62	28
0.9	M 18	40	72	40	30	14	71	40.5
1.2	M 20	40	72	40	30	14	71	42.4
1.5	M 22	45	81	45	35	14	80	67.3
1.8	M 24	50	90	50	36	18	90	83.4
2.5	M 27	50	90	50	36	18	90	122
3.2	M 30	65	108	60	45	22	109	166
4.3	M 33	65	108	60	45	22	110	216
4.6	M 36	75	126	70	54	26	128	265
6.1	M 39	75	126	70	54	26	130	334
6.3	M 42	85	144	80	63	30	147	403
8	M 45	85	144	80	63	35	150	521
8.6	M 48	100	166	90	68	35	168	632
11.5	M 56	110	184	100	78	38	187	880
16	M 64	120	206	110	90	42	208	1240

Green Pin® eye nuts generally to DIN 582

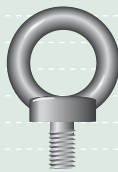
- **Material** : carbon steel, C15
- **Safety factor** : MBL equals 6 x WLL
- **Standard** : generally to DIN 582
- **Finish** : self coloured,
electro-galvanized
- **Certification** : certificates can be supplied on request



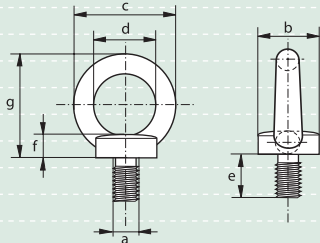
S-8142
E-8142



working load limit	diameter thread	diameter base	diameter eye outside	diameter eye inside	thickness base	height	weight per 100 pcs
tons	a mm	b mm	c mm	d mm	e mm	f mm	kg
0.07	M 6	20	36	20	8.5	36	4.2
0.14	M 8	20	36	20	8.5	36	5.2
0.23	M 10	25	45	25	10	45	9.4
0.34	M 12	30	54	30	11	53	16
0.49	M 14	35	63	35	13	60	22
0.7	M 16	35	63	35	13	62	24
1.2	M 20	40	72	40	16	71	35.2
1.5	M 22	45	81	45	18	80	58.6
1.8	M 24	50	90	50	20	90	70.6
2.5	M 27	50	90	50	20	90	102
3.2	M 30	65	108	60	25	109	132
4.3	M 33	65	108	60	25	110	170
4.6	M 36	75	126	70	30	128	208
6.1	M 39	75	126	70	30	130	260
6.3	M 42	85	144	80	35	147	311
8	M 45	85	144	80	35	150	407
8.6	M 48	100	166	90	40	168	502
11.5	M 56	110	184	100	45	187	669
16	M 64	120	206	110	50	208	930



S-8180
E-8180



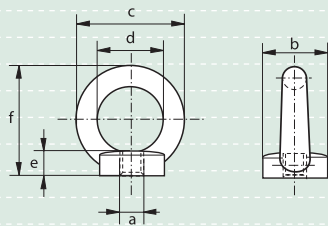
Green Pin® eye bolts C15E according to DIN 580

- **Material** : carbon steel, C15E
- **Safety factor** : MBL equals 6 x WLL
- **Standard** : DIN 580
- **Finish** : selfcoloured
electro-galvanized
- **Certification** : certificates can be supplied upon request

working load limit	diameter thread	diameter base	diameter eye outside	diameter eye inside	length	thickness base	height	weight per 100 pcs
tons	a mm	b mm	c mm	d mm	e mm	f mm	g mm	kg
0.14	M 8	20	36	20	13	6	36	6
0.23	M 10	25	45	25	17	8	45	10.3
0.34	M 12	30	54	30	20.5	10	53	17.7
0.7	M 16	35	63	35	27	12	62	28
1.2	M 20	40	72	40	30	14	71	42.4
1.8	M 24	50	90	50	36	18	90	83.4
3.2	M 30	65	108	60	45	22	109	166
4.6	M 36	75	126	70	54	26	128	265



S-8182
E-8182



Green Pin® eye nuts C15E according to DIN 582

- **Material** : carbon steel, C15E
- **Safety factor** : MBL equals 6 x WLL
- **Standard** : DIN 582
- **Finish** : selfcoloured
electro-galvanized
- **Certification** : certificates can be supplied upon request

working load limit	diameter thread	diameter base	diameter eye outside	diameter eye inside	thickness base	height	weight per 100 pcs
tons	a mm	b mm	c mm	d mm	e mm	f mm	kg
0.14	M 8	20	36	20	8.5	36	5.2
0.23	M 10	25	45	25	10	45	9.4
0.34	M 12	30	54	30	11	53	16
0.7	M 16	35	63	35	13	62	24
1.2	M 20	40	72	40	16	71	35.2
1.8	M 24	50	90	50	20	90	70.6
3.2	M 30	65	108	60	25	109	132
4.6	M 36	75	126	70	30	128	208



- 1
- 2
- 3
- 4
- 5
- 6
- 7
- 8
- 9
- 10
- 11
- 12
- 13
- 14
- 15
- 16